



**Automatic Blood Pressure Monitor**

Model BP100  
Instruction Manual



3723568-1F  
Issue Date: 2022-11-07

**Introduction**

Thank you for purchasing the BP100 Automatic Blood Pressure Monitor. The BP100 is a compact, fully automatic blood pressure monitor, operating on the oscillometric principle. It measures your blood pressure and pulse rate simply and quickly.

**Intended Use**

This product is a digital monitor intended for use in measuring blood pressure and pulse rate in adult patient population who can understand this instruction manual with the arm circumference range printed on the arm cuff. It is mainly designed for general household use.

Please follow this instruction manual thoroughly for your safety.

Please keep for future reference. For specific information about your own blood pressure, CONSULT YOUR PHYSICIAN.

**Important Safety Information**

**Warning:** Indicates a potentially hazardous situation which, if not avoided, could result in death or serious injury.

**(General Usage)**

- DO NOT adjust medication based on measurement results from this blood pressure monitor. Take medication as prescribed by your doctor. Only a doctor is qualified to diagnose and treat High Blood Pressure.
- Consult your doctor before using this monitor for any of the following conditions: common arrhythmias such as atrial or ventricular premature beats or atrial fibrillation, arterial sclerosis, poor perfusion, diabetes, age, pregnancy, pre-eclampsia, renal diseases.
- Note that PATIENT motion, trembling, shivering may affect the measurement reading.
- Do not use this monitor on the injured arm or the arm under medical treatment.
- Do not apply the arm cuff on the arm while being on an intravenous drip or blood transfusion.
- Consult your doctor before using this monitor on the arm with an arterio-venous (A-V) shunt.
- Do not use this monitor with other medical electrical (ME) equipment simultaneously. This may result in incorrect operation of the monitor and/or cause an inaccurate reading.
- DO NOT use this monitor in an area where HF surgical equipment, MRI, or CT scanner exists, or in an oxygen rich environment. This may result in incorrect operation of the monitor and/or cause an inaccurate reading.
- The air tube may cause accidental strangulation in infants.
- Contains small parts that may cause a choking hazard if swallowed by infants.
- Stop using this monitor and consult your doctor if you experience skin irritation or other troubles.

**Caution:** Indicates a potentially hazardous situation which, if not avoided, may result in minor or moderate injury to the user or patient or damage to the equipment or other property.

**(General Usage)**

- Always consult your doctor. Self-diagnosis of measurement results and self-treatment are dangerous.
- Consult your doctor before using this monitor for any of the following conditions:
  - If you have had a mastectomy.
  - People with severe blood flow problems or blood disorders as cuff inflation can cause bruising.
- Do not take measurements more than necessary. It may cause bruising due to blood flow interference.
- If there are any abnormalities during the measurement, remove the arm cuff.
- Do not use this monitor on infants or persons who cannot express their intentions.
- Do not inflate the arm cuff more than necessary.
- Do not use this monitor for any purpose other than measuring blood pressure.
- Use only the approved arm cuff for this monitor. Use of other arm cuffs may result in incorrect measurement results.
- During measurement, make sure that no mobile phone or any other electrical devices that emit electromagnetic fields is within 30cm of this monitor. This may result in incorrect operation of the monitor and/or cause an inaccurate reading.
- Do not disassemble the monitor or arm cuff. This may cause an inaccurate reading.
- Do not use in a location with moisture, or a location where water may splash on this monitor. This may damage this monitor.
- Do not use this monitor in a moving vehicle (car, airplane).

**(Battery Usage)**

- Do not insert the batteries with their polarities incorrectly aligned.
- Use only four "AA" alkaline or manganese batteries with this monitor. Do not use other types of batteries. Do not use new and used batteries together.
- Remove the batteries if this monitor will not be used for 3 months or more.
- Use the battery within recommended period mentioned to it.

**General Precautions**

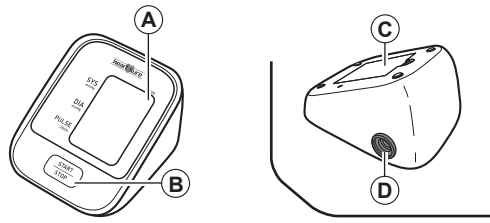
- Do not forcibly bend the arm cuff or bend the air tube excessively.
- Do not fold or kink the air tube while taking a measurement. This may cause harmful injury by interrupting blood flow.
- To unplug the air plug, pull on the air plug at the connection with the monitor, not the tube itself.
- Do not apply strong shocks and vibrations to or drop the monitor and arm cuff.
- Do not inflate the arm cuff when it is not wrapped around your arm.
- Read and follow the "Important information regarding Electromagnetic Compatibility (EMC)" in the "6. Specifications".
- Read and follow the "Correct Disposal of This Product" in the Technical Data Section when disposing of this monitor and any used accessories or optional parts.
- Do not use this monitor outside the specified environment. It may cause an inaccurate reading.
- Dispose of this monitor, components and optional accessories according to applicable local regulations. Unlawful disposal may cause environmental pollution.
- Please check (for example, by observation of the limb concerned) if this monitor is not causing a prolonged impairment of PATIENT blood circulation.
- If this monitor is stored at the maximum or minimum storage and transport temperature and is moved to an environment with a temperature of 20°C, we recommend waiting for approx. 2 hours before using the monitor.

**1. Know Your Monitor**

**Contents:**

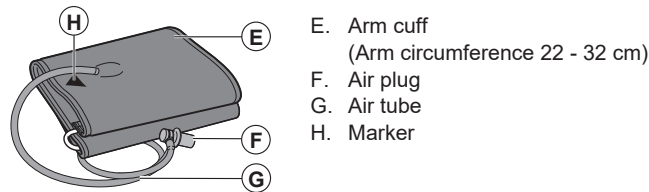
Monitor, arm cuff, instruction manual, battery set

**Monitor:**



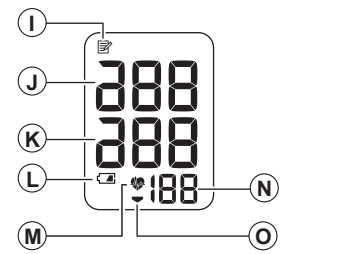
- A. Display
- B. START/STOP button
- C. Battery compartment
- D. Air jack

**Arm cuff:**



- E. Arm cuff (Arm circumference 22 - 32 cm)
- F. Air plug
- G. Air tube
- H. Marker

**Display:**



- I. Memory symbol
- J. Systolic blood pressure
- K. Diastolic blood pressure
- L. Battery symbol (low/depleted)
- M. Heartbeat symbol (Flashes during measurement.)
- N. Pulse display
- O. Deflation symbol

**Before Taking a Measurement**

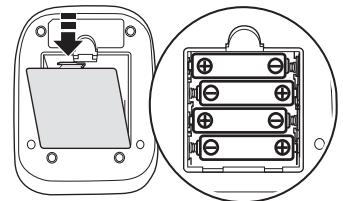
To help ensure an accurate reading, follow these directions:

- Avoid bathing, drinking alcohol or caffeine, smoking, exercising and eating for 30 minutes before taking a measurement.
- Rest for at least 5 minutes before taking the measurement.
- Stress raises blood pressure. Avoid taking measurements during stressful times.
- Measurements should be taken in a quiet place.
- Remove tight-fitting clothing from your arm.

**2. Preparation**

**2.1 Battery Installation**

- Remove the battery cover.



- Insert 4 "AA" batteries as indicated in the battery compartment.

- Replace the battery cover.

**Notes:**

- When the depleted battery symbol ( ) appears on the display, turn the monitor off and remove all the batteries. Replace with 4 new batteries at the same time. Long life alkaline batteries are recommended.
- The measurement values continue to be stored in memory even after the batteries are replaced.
- The supplied batteries may have a shorter life.

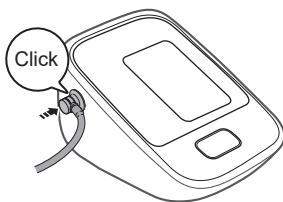
Disposal of used batteries should be carried out in accordance with the national/local regulations for the disposal of batteries.

**3. Using the Monitor**

**3.1 Applying the Arm Cuff**

Remove tight-fitting clothing or tight rolled up sleeve from your left upper arm. Do not place the arm cuff over thick clothes.

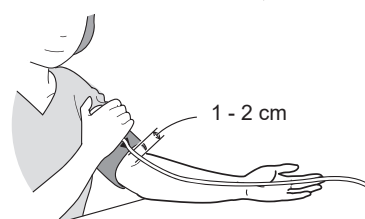
- Plug the arm cuff into your monitor by inserting the air plug into the air jack securely until it clicks.



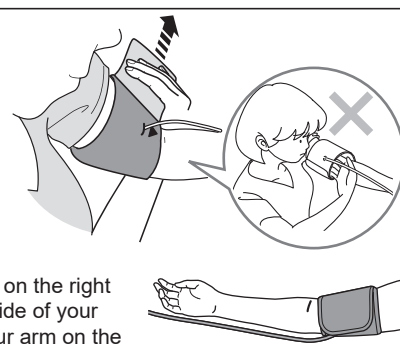
- Wrap the arm cuff firmly in place around your left upper arm.



The bottom edge of the arm cuff should be 1 to 2 cm above the elbow. Air tube is on the inside of your arm and aligned with your middle finger.



- Secure closed with the fabric fastener.



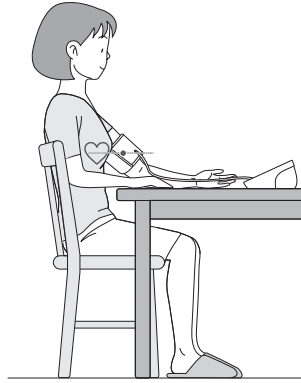
**Notes:**

- When you take a measurement on the right arm, the air tube will be at the side of your elbow. Be careful not to rest your arm on the air tube.
- The blood pressure can differ between the right arm and the left arm, also the measured blood pressure values can be different. Recommend to always use the same arm for measurement. If the values between both arms differ substantially, please check with your physician which arm to use for your measurements.

**3.2 How to Sit Correctly**

To take a measurement, you need to be relaxed and comfortably seated at comfortable room temperature.

- Sit on a chair with your legs uncrossed and your feet flat on the floor.
- Sit with your back and arm being supported.
- The arm cuff should be placed on your arm at the same level as your heart.



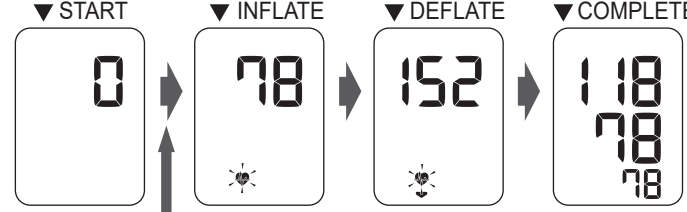
**3.3 Taking a Measurement**

**Notes:**

- To stop a measurement, press the START/STOP button once to release the air in the arm cuff.
- Remain still and do not talk while taking a measurement.

- Press the START/STOP button.

The arm cuff will start to inflate automatically.



**If your systolic pressure is more than 210 mmHg**

After the arm cuff starts to inflate, press and hold the START/STOP button until the monitor inflates 30 to 40 mmHg higher than your expected systolic pressure.

**Notes:**

- The monitor will not inflate above 299 mmHg.
- Do not apply more pressure than necessary.

- Remove the arm cuff.

- Press the START/STOP button to turn the monitor off.

The monitor automatically stores the measurement result in its memory. It will automatically turn off after 2 minutes.

Note: Wait 2-3 minutes before taking another measurement. Waiting between measurements allows the arteries to return to the condition prior to taking a measurement.

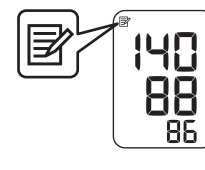
Always consult your physician. Self-diagnosis of measurement results and self-treatment are dangerous.

**3.4 Using the Memory Function**

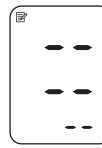
The monitor automatically stores the last measurement values (blood pressure and pulse rate).

**To View the Measurement Values Stored in Memory**

- Press and hold the START/STOP button for more than 5 seconds. The last measurement value is displayed along with the memory symbol.



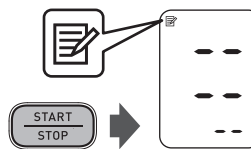
Note: If there are no measurements results stored in the memory, the screen to the right is displayed.



- Press the START/STOP button to turn the monitor off. It will automatically turn off after 2 minutes.

**To Delete the Values Stored in Memory**

Press and hold the START/STOP button for more than 15 seconds.



**4. Error Messages and Troubleshooting**

**4.1 Error Messages**

Error Display	Cause	Solution
	The batteries are low.	Recommend to replace the batteries with new ones ahead of time. Refer to section 2.1.
	The batteries are depleted.	Replace 4 batteries with new ones at once. Refer to section 2.1.
E1	Air plug disconnected.	Insert the plug securely. Refer to section 3.1.
	Arm cuff is applied too loosely.	Apply the arm cuff tighter. Refer to section 3.1.
	Air is leaking from the arm cuff.	Replace the cuff with a new one. Refer to section 5.3.
E2	Movement during measurement and the arm cuff has not been inflated sufficiently.	Repeat measurement. Remain still and do not talk during measurement. Refer to section 3.3.
		If "E2" appears repeatedly, inflate the cuff manually until it is 30 to 40 mmHg above your previous measurement result. Refer to section 3.3.
E3	The arm cuff was inflated exceeding the maximum allowable pressure, and then deflated automatically.	Do not touch the arm cuff and/or bend the air tube while taking a measurement. Do not inflate the arm cuff more than necessary. Refer to section 3.3.
E4	Movement during measurement.	Repeat measurement. Remain still and do not talk during measurement. Refer to section 3.3.
E5	Clothing is interfering with the arm cuff.	Remove any clothing interfering with the arm cuff. Refer to section 3.1.
E7	Device error.	Contact your local representative.

**4.2 Troubleshooting**

In case of any of the below problems occur during measurement, first check that no other electrical device is within 30cm. If the problem persists, please refer to the table below.

Problem	Cause	Solution
The measurement result is extremely high (or low).	Arm cuff is applied too loosely.	Apply the arm cuff tighter. Refer to section 3.1.
	Movement or talking during measurement.	Remain still and do not talk during measurement. Refer to section 3.3.
	Clothing is interfering with the arm cuff.	Remove any clothing interfering with the arm cuff. Refer to section 3.1.
Arm cuff pressure does not rise.	The air connector is not securely connected into the air jack.	Make sure that the air tube is connected securely. Refer to section 3.1.
Arm cuff deflates too soon.	Air is leaking from the arm cuff.	Replace the arm cuff with a new one. Refer to section 5.3.
	The arm cuff is loose.	Apply the cuff correctly so that it is firmly wrapped around the arm. Refer to section 3.1.
Cannot measure or the results are too low or too high.	The arm cuff has not been inflated sufficiently.	Inflate the cuff so that it is 30 to 40 mmHg above your previous measurement result. Refer to section 3.3.
Nothing happens when you press the buttons.	The batteries are depleted.	Replace the batteries with new ones. Refer to section 2.1.
	The batteries have been inserted incorrectly.	Insert the batteries with the correct (+/-) polarity. Refer to section 2.1.
Other problems.	<ul style="list-style-type: none"> <li>Press the START/STOP button and repeat measurement.</li> <li>Replace the batteries with new ones.</li> <li>If the problem continues, contact your local representative.</li> </ul>	

**Interpreting readings**  
Only your Healthcare Professional can interpret your individual blood pressure readings.

**High blood pressure classifications\***

	Healthcare Professional Environment	Home Environment
Systolic	≥ 140 mmHg	≥ 135 mmHg
Diastolic	≥ 90 mmHg	≥ 85 mmHg

\*Adapted from Williams et al. 2018 ESC/ESH Guidelines for the management of arterial hypertension. European Heart Journal 2018; 39: 3022-3034

**Recording readings**

You can download a printable blood pressure diary on our website at [jadvey.com.au](http://jadvey.com.au) to track your readings manually.

**Blood pressure monitoring at home**

High blood pressure (hypertension) can lead to serious health problems. Regular self-check can assist your Healthcare Professional to evaluate your blood pressure trend.

A single measurement may not be sufficient for an accurate diagnosis. Many factors such as physical activity, anxiety, or the time of day can influence your blood pressure. Thus it is best to try and measure your blood pressure at the same time each day to get an accurate indication of any changes in blood pressure.

**What is blood pressure?**

Blood pressure is simply a measure of the pressure of your blood in the arteries as your heart is pumping it around your body. You may have heard phrases like 118 over 78.

So what does that mean?  
The first figure (118) is called the **systolic blood pressure**, while the second figure (78) is called the **diastolic blood pressure**.

**Systolic blood pressure**  
Systolic (sis-toh-ick) blood pressure is a measure of the pressure as the heart pumps the blood into the arteries when it beats.

**Diastolic blood pressure**  
Diastolic (die-a-stoh-ick) pressure is the smaller number. It is the pressure when the heart is at rest, between beats.

**Pulse**  
Pulse = heartbeats per minute



Warranty Information  
Blood Pressure Monitors



Should you require any further information please do not hesitate to contact us

**IN AUSTRALIA:**  
JADVEY PTY LTD  
1800 807 864  
Telephone:  
Website: [jadvey.com.au](http://jadvey.com.au)

**IN NEW ZEALAND:**  
JADVEY LTD  
0800 523 583  
Telephone:  
Website: [jadvey.co.nz](http://jadvey.co.nz)

Symbols description	
	Range pointer and brachial artery alignment position
	Not made with natural rubber latex
	Range indicator of arm circumferences to help selection of the correct cuff size.
	Need for the user to consult this instruction manual.
	Need for the user to follow this instruction manual thoroughly for your safety.
	Direct current
	Alternating current
	Date of manufacture
	Arm circumference

Depending on the product, some of the above symbols may not be applicable on the product.

**Important information regarding Electromagnetic Compatibility (EMC)**  
 BP100 manufactured by OMRON HEALTHCARE Co., Ltd. conforms to EN60601-1-2:2015 Electromagnetic Compatibility (EMC) standard. Further documentation in accordance with this EMC standard is available at <http://www.omronhealthcare-ap.com/emc-information>. Refer to the EMC information for BP100 on the website.

**Correct Disposal of This Product (Waste Electrical & Electronic Equipment)**

This marking shown on the product or its literature, indicates that it should not be disposed of, with other household wastes at the end of its working life. To prevent possible harm to the environment or human health from uncontrolled waste disposal, please separate this product from other types of wastes and recycle it responsibly to promote the sustainable reuse of material resources.

Household users should contact either the retailer where they purchased this product, or their local government office, for details of where and how they can return this item for environmentally safe recycling.

Business users should contact their supplier and check the terms and conditions of the purchase contract. This product should not be mixed with other commercial waste for disposal.

<b>Manufacturer</b>	OMRON HEALTHCARE Co., Ltd. 53, Kunotsubo, Terado-cho, Muko, KYOTO, 617-0002 JAPAN
<b>EU-representative</b>	OMRON HEALTHCARE EUROPE B.V. Scorpius 33, 2132 LR Hoofddorp, THE NETHERLANDS <a href="http://www.omron-healthcare.com">www.omron-healthcare.com</a>
<b>Importer in EU</b>	J.A. DAVEY PTY LTD. 626 Lorimer Street, Port Melbourne VIC 3207 Australia J.A. DAVEY LTD. C/-58 Richard Pearse Drive, Mangere, Auckland, New Zealand
<b>Distributed by</b>	J.A. DAVEY PTY LTD. 626 Lorimer Street, Port Melbourne VIC 3207 Australia J.A. DAVEY LTD. C/-58 Richard Pearse Drive, Mangere, Auckland, New Zealand
<b>Production facility</b>	OMRON HEALTHCARE MANUFACTURING VIETNAM CO., LTD. Binh Duong Province, VIETNAM

Made in Vietnam

## 6. Specifications

<b>Product description</b>	Automatic Blood Pressure Monitor
<b>Model</b>	BP100 (HEM-7122-AU)
<b>Display</b>	LCD Digital Display
<b>Measurement method</b>	Oscillometric method
<b>Cuff pressure range</b>	0 to 299 mmHg
<b>Blood pressure measurement range</b>	20 to 280 mmHg
<b>Pulse measurement range</b>	40 to 180 beats/min.
<b>Accuracy</b>	Pressure: $\pm 3$ mmHg Pulse: $\pm 5$ % of display reading
<b>Inflation</b>	Fuzzy-logic controlled by electric pump
<b>Deflation</b>	Automatic pressure release valve
<b>Memory</b>	Last Measurement
<b>Rating</b>	DC6 V 4 W
<b>Operation mode</b>	Continuous operation
<b>Power source</b>	4 "AA" batteries 1.5 V
<b>Battery life</b>	Approx. 1000 measurements (using new alkaline batteries)
<b>Durable Period</b>	Monitor: 5 years Cuff: 1 year
<b>Applied part</b>	Type BF (Cuff)
<b>Protection against electric shock</b>	Internally powered ME equipment
<b>Operating conditions</b>	+10 to +40 °C / 15 to 90% RH (non-condensing) / 700 to 1060 hPa
<b>Storage/ Transport conditions</b>	-20 to +60 °C / 10 to 95 % RH (non-condensing) / 700 to 1060 hPa
<b>IP classification</b>	IP 20
<b>Weight</b>	Monitor: Approx. 250 g without batteries Arm cuff: Approx. 130 g
<b>Outer dimensions</b>	Monitor: Approx. 103 (w) mm x 80 (h) mm x 129 (l) mm Arm cuff: Approx. 145 mm x 466 mm
<b>Cuff circumference</b>	22 to 32 cm
<b>Cuff/ Tube material</b>	Nylon, polyester, polyvinyl chloride
<b>Package contents</b>	Monitor, arm cuff, instruction manual, battery set

### Notes:

- These specifications are subject to change without notice.
- In the clinical validation study, the 5th phase was used on 85 subjects for determination of diastolic blood pressure.
- This monitor is clinically investigated according to the requirements of EN ISO 81060-2:2014 and complies with EN ISO 81060-2:2014 and EN ISO 81060-2:2019+A1:2020.
- This monitor has not been validated for use on pregnant patients.
- IP classification is degrees of protection provided by enclosures in accordance with IEC 60529. This monitor is protected against solid foreign objects of 12.5 mm diameter and greater such as a finger.

## CE 0197

- This blood pressure monitor is designed according to the European Standard EN1060, Non-invasive sphygmomanometers Part 1: General Requirements and Part 3: Supplementary requirements for electromechanical blood pressure measuring systems.
- Please report to the manufacturer and the competent authority of the Member State in which you are established about any serious incident that has occurred in relation to this device.

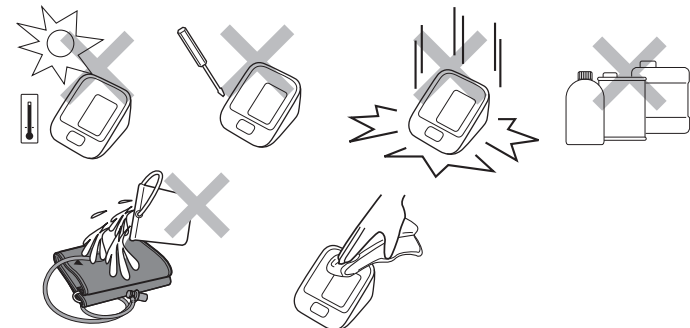
Symbols description	
	Applied part - Type BF Degree of protection against electric shock (leakage current)
	Class II equipment. Protection against electric shock
	CE Marking
	Serial number
	Medical device
	LOT number
	Temperature limitation
	Humidity limitation
	Atmospheric pressure limitation
	Indication of connector polarity
	For indoor use only
	OMRON's trademarked technology for blood pressure measurement
	Identifier of cuffs compatible for the device
	Cuff positioning indicator for the left arm
	Marker on the cuff to be positioned above the artery

## 5. Maintenance and Storage

### 5.1 Maintenance

To protect your monitor from damage, please observe the following:

- Store the monitor and the components in a clean, safe location.
- Do not use any abrasive or volatile cleaners.
- Do not wash the monitor and any components or immerse them in water.
- Do not use petrol, thinners or similar solvents to clean the monitor.



- Use a soft and dry cloth, or a soft and moistened cloth and neutral soap to clean on the monitor and the arm cuff.
- Changes or modification not approved by the manufacturer will void the user warranty. Do not disassemble or attempt to repair the monitor or components. Consult your local representative.

### Calibration and Service

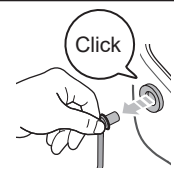
- The accuracy of this blood pressure monitor has been carefully tested and is designed for a long service life.
- It is generally recommended to have the device inspected every 2 years to ensure correct functioning and accuracy. Please consult your local representative.

### 5.2 Storage

#### 1. Remove the arm cuff from the monitor.

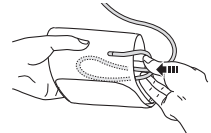
The air plug is firmly connected not to come off accidentally.

When removing the arm cuff from the monitor, pull the air plug in a straight way from the air jack. It clicks during pulling out.



#### 2. Gently fold the air tube into the arm cuff.

Note: Do not bend or crease the air tube excessively.



Do not store your monitor in the following situations:

- If your monitor and other components are wet.
- Locations exposed to extreme temperatures, humidity, direct sunlight, dust or corrosive vapours such as bleach.
- Locations exposed to vibrations, shocks or where it will be at an angle.

### 5.3 Optional Parts



Medium Cuff  
HEM-CR24  
Type B  
22 - 32 cm



Wide Range Soft Cuff  
HEM-RML31  
Type B  
22 - 42 cm



Small Cuff  
HEM-CS24  
Type B  
17 - 22 cm

Note: Do not throw the air plug away. The air plug can be applicable to the optional cuff.

## PRODUCT WARRANTY

Please register your warranty information at [jaley.com.au](http://jaley.com.au) (for AU & NZ)

This Heart Sure device is warranted to be free of manufacturing defects for 2 years from the date of purchase\*. This warranty is void if the product is modified or altered in subject to misuse or if damage occurs by reason of failure to follow the written instruction booklet enclosed, or if product repairs are carried out without authority from J.A. Davey Pty Ltd.

We will repair, or at our option replace free of charge, any parts necessary to correct material or workmanship or replace the product with a new one of equivalent value. The cost of postage and return freight will be borne by the customer. However, we will quote for any repair which will be carried out on acceptance of our quotation. The benefits conferred by this warranty are in addition to all other rights and remedies in law and equity and are not intended to limit or exclude any rights and other states or territory laws in Australia and New Zealand.

Our goods come with guarantees that cannot be excluded under Australian and New Zealand Consumer Law. You are entitled to a refund or replacement of the goods if they do not meet the requirements for any other reasonably foreseeable loss or damage. You are also entitled to have the goods repaired or replaced if the goods fail to be of acceptable quality and the failure does not amount to a major failure.

### Before you send in your unit for service

Before sending in your unit for service, please take a few minutes to do the following:

- In your instruction manual, read the troubleshooting section that describes common problems, their cause and solutions. Product instruction manuals can be downloaded online.
- Contact Heart Sure customer service. Our staff are trained to assist you with most issues you may have experienced, without the need to send your product to service.

**PLEASE CALL OUR TOLL FREE NUMBER:**  
**IN AUSTRALIA:** 1800 807 464  
**IN NEW ZEALAND:** 0800 523 583

### Sending in your unit for service

1. Should repair be needed within the warranty period, enclose the cut out section of this warranty form and your proof of purchase receipt. Please ensure all relevant details are completed and before sending your unit in for service. Please ensure you contact our customer service team to advise you of the location of the problem you are experiencing together with your purchase receipt.
2. Include the unit with all product component in your package. This is extremely important, so our repair technicians can make the correct diagnosis with any pressure monitor for service, include your arm measurement (ARM CIRCUMFERENCE).

\* Please note the cuff is warranted to be free from defects in materials and workmanship appearing within one year from the date of purchase when the monitor is used in accordance with the instructions provided with the monitor. The cuff is not warranted for wear and tear. Neither the device or cuff are eligible for extended warranty.

### 3. Please return the unit, warranty card or repair form at your cost to:

**IN AUSTRALIA**  
 J.A. Davey Pty Ltd - Heart Sure Repairs  
 PO Box 84  
 Port Melbourne  
 Victoria, Australia 3207

**IN NEW ZEALAND**  
 BV Medical - Heart Sure Repairs  
 Unit 7, 110 Mays Road  
 Onehunga  
 Auckland, New Zealand 1061

**heart sure**

PLEASE RETAIN THIS WARRANTY FORM  
 AS IT IS NECESSARY TO OBTAIN  
 YOUR PRODUCT FOR REPAIR UNDER WARRANTY.

NAME: \_\_\_\_\_  
 ADDRESS: \_\_\_\_\_  
 PHONE: \_\_\_\_\_  
 EMAIL: \_\_\_\_\_  
 MODEL: \_\_\_\_\_  
 DATE OF PURCHASE: \_\_\_\_\_  
 PLEASE ATTACH PROOF OF PURCHASE  
 RETAILER'S NAME: \_\_\_\_\_  
 RETAILER'S ADDRESS: \_\_\_\_\_  
 BRIEF DESCRIPTION OF PROBLEM YOU ARE EXPERIENCING: \_\_\_\_\_  
 POSTCODE: \_\_\_\_\_

WARRANTY IS VOID UNLESS THE ABOVE INFORMATION IS COMPLETELY AND CORRECT.